

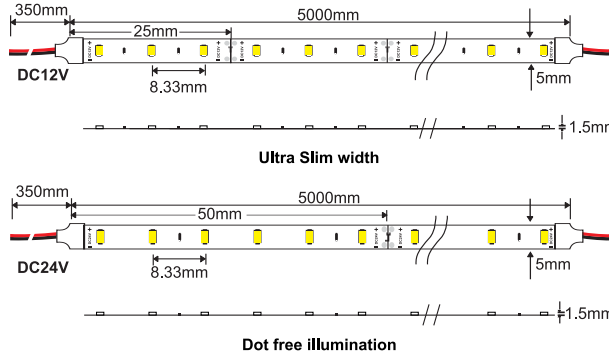


Svelte

**Svelte 9.6**  
LFS454

120 LED's per meter

480 lumens per meter@3000k



Voltage  12V DC12V  
 24V DC24V

Sleeving  SC Clear  
 SO Opal

IP Rating  20 IP20  
 65 IP65  
 67 IP67  
 68 IP68

Standard LED strip

Linear LED Strip Light

\*\*Custom made color temperature can be made available on request\*\*



9.6W/M



22 420lm/m  
 24 440lm/m



2200K  
 2400K



40 500lm/m  
 50 520lm/m



4000K  
 5000K



120°



27 460lm/m  
 30 480lm/m



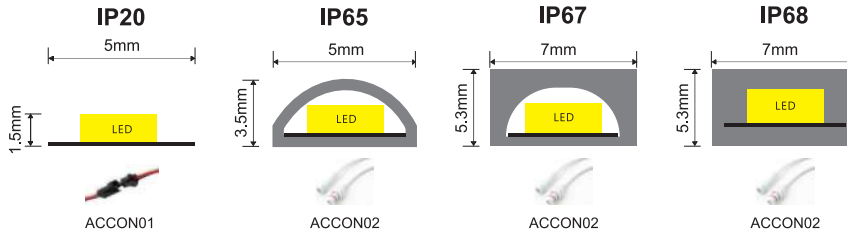
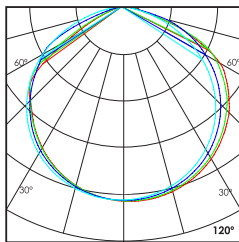
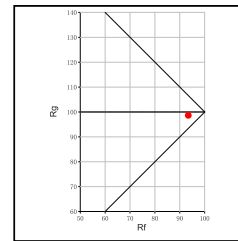
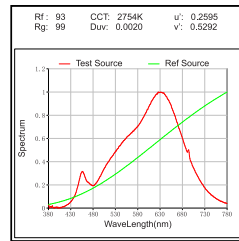
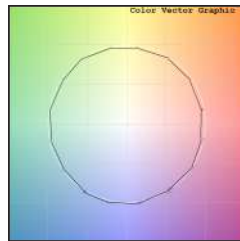
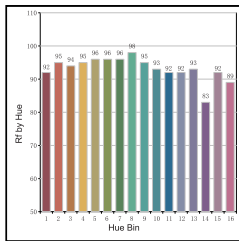
2700K  
 3000K



65 560lm/m  
 70 580lm/m



6500K  
 7000K



Technical Details

\*\*LFS454 model can also be used without any heat sink profile\*\*

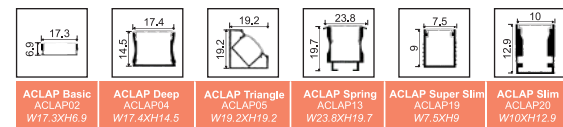
Type	Flexible circuit board	Number of LED's per meter	120 LED's
Mounting	Surface tape mounted	CRI	>90
Light Source	SMD LED	MacAdam Ellipse	<3
Minimum cut length	25mm/50mm	Luminous Efficacy	50lm/W@3000k
Junction Temperature	Tj<75 Degree	Lumens per meter	480lm/M@3000k
Operating Voltage	12V/24V	Life Time	L80-B10 50,000hrs.

Accessories

Profile that can be used with above LED Strip

Power Options

- Non Dimmable
- Phase Cut Dimming
- 0-10/ 1-10V Analog
- DALI Dimming



Ordering code : LFSxxx(model no)-xxx(voltage)-Sx(sleeving)-xx(IP)-xxxx(watt per mtr+cct)-x(dimming)-ACCONxx(connector)-ACLAPxx(profile)  
 Example : {454}{12V}{SC}{65}{2,427}{A}{02}{02}

[Sleeving not applicable for IP20 model]