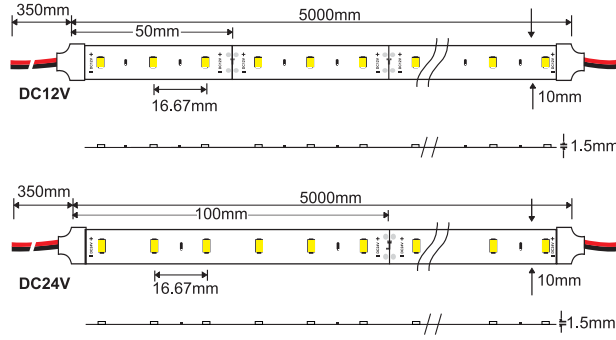




**Svelte 12**  
LFS456  
60 LED's per meter  
1320 lumens per meter@3000k



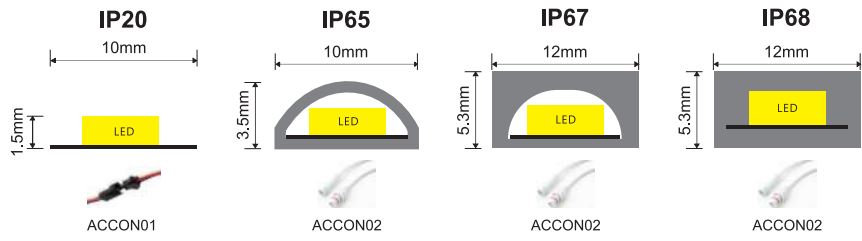
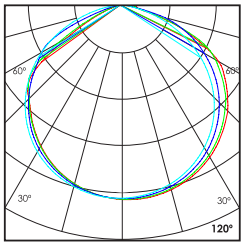
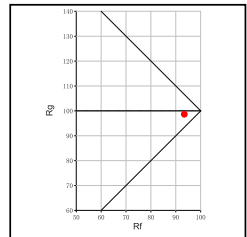
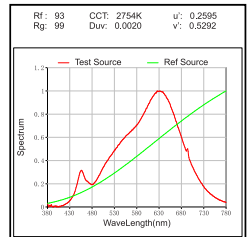
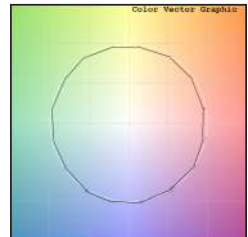
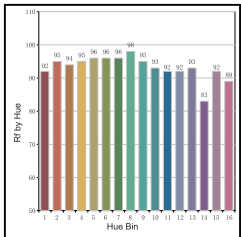
- Voltage: 12V DC12V, 24V DC24V
- Sleeving: SC Clear, SO Opal
- IP Rating: 20 IP20, 65 IP65, 67 IP67, 68 IP68

Standard LED strip

Linear LED Strip Light

\*\*Custom made color temperature can be made available on request\*\*

12W/M	<span style="border: 1px solid black; padding: 2px;">22</span> 1170lm/m	<span style="border: 1px solid black; padding: 2px;">24</span> 1220lm/m	2200K	2400K	<span style="border: 1px solid black; padding: 2px;">40</span> 1380lm/m	<span style="border: 1px solid black; padding: 2px;">50</span> 1440lm/m	4000K	5000K
120°	<span style="border: 1px solid black; padding: 2px;">27</span> 1270lm/m	<span style="border: 1px solid black; padding: 2px;">30</span> 1320lm/m	2700K	3000K	<span style="border: 1px solid black; padding: 2px;">65</span> 1550lm/m	<span style="border: 1px solid black; padding: 2px;">70</span> 1610lm/m	6500K	7000K



Technical Details

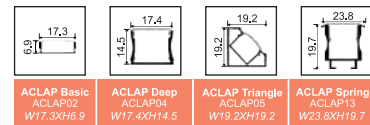
\*\*LFS456 model can also be used without any heat sink profile\*\*

Type	Flexible circuit board	Number of LED's per meter	60 LED's
Mounting	Surface tape mounted	CRI	>90
Light Source	SMD LED	MacAdam Ellipse	<3
Minimum cut length	50mm/100mm	Luminous Efficacy	110lm/W@3000k
Junction Temperature	Tj<75 Degree	Lumens per meter	1320lm/M@3000k
Operating Voltage	12V/24V	Life Time	L80-B10 50,000hrs.

Accessories

Profile that can be used with above LED Strip

- Power Options
- N Non Dimmable
  - P Phase Cut Dimming
  - A 0-10/ 1-10V Analog
  - D DALI Dimming



Ordering code : LFSxxx(model no)-xxx(voltage)-Sx(sleeving)-xx(IP)-xxxx(watt per mtr+cct)-x(dimming)-ACCONxx(connector)-ACLAPxx(profile)  
 Example : {456} {12V} {SC} {65} {2,427} {A} {02} {02}